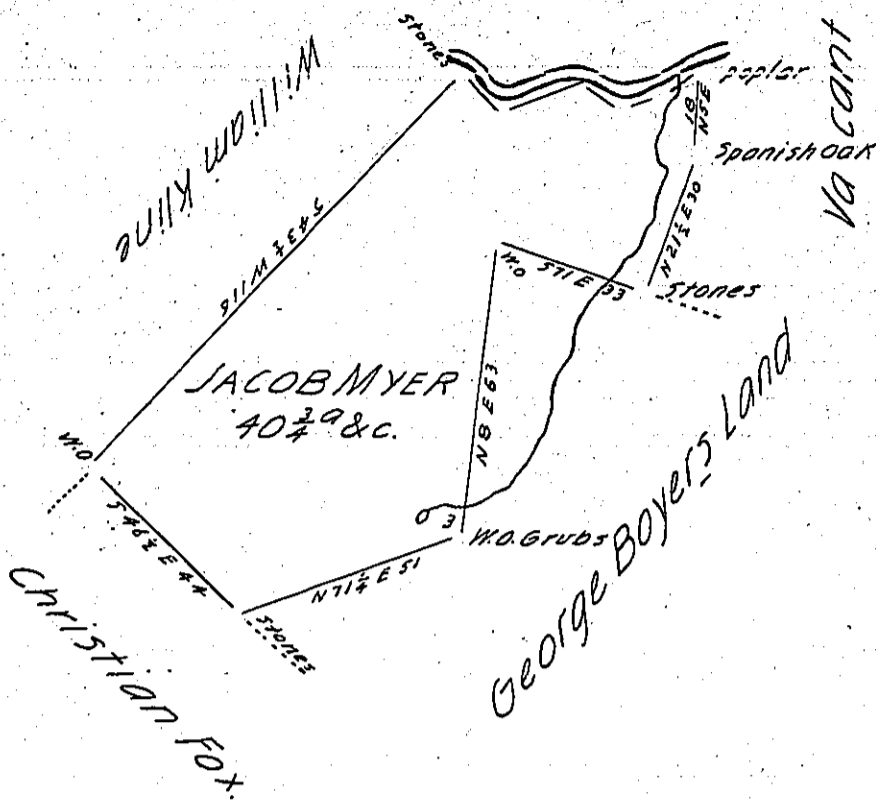


Courses on Bennets run  
 from the Poplar to the  
 Stones, up the Same  
 S 56 W 10  
 S 77 W 8  
 N 59 W 10  
 S 73 W 20  
 N 47 1/2 W 12 1/2  
 60 1/2



A Draught of a Tract of Land Situate in Newbury Township in the County  
 of York Surveyed the 17<sup>th</sup> April 1789 in Pursuance of an Application  
 N<sup>o</sup> 5219 dated the 24<sup>th</sup> of October 1768, and an Order from the Honor-  
 able Board Property of the 25<sup>th</sup> of May 1772. Containing Forty and  
 and Three Quarter Acres and the Usual Allowance of Six Acres #  
 Cent for Roads &c

John Forsyth D.S

To John Lukens Esq<sup>r</sup>  
 Surveyor General

IN TESTIMONY that the above is a copy of the original remaining on file in  
 the Department of Internal Affairs of Pennsylvania, made  
 conformably to an Act of Assembly approved the 16th day of  
 February, 1833, I have hereunto set my Hand and caused  
 the Seal of said Department to be affixed at Harrisburg,  
 this thirteenth day of April 1904.

*Isaac R. Brown*  
 Secretary of Internal Affairs.